

An abstract painting with a textured, layered appearance. The left side features a dark, textured purple and brown area. The top left corner has vibrant green and blue strokes. The right side is dominated by light, textured beige and cream tones. The overall style is expressive and painterly.

GREEN PLOUGH



GREEN PLOUGH

Ron Nyisztor

September - November 2012

Nyisztor Studio +



Fillaudeau's café – restaurant is located at Pinelli Estate in the Swan Valley,
30 Bennett Street, Caversham Western Australia.

Nyisztor Studio is housed at 391 Canning Hwy, Melville

www.nyisztor.com.au | www.fillaudeaus.com.au | www.pinelliwines.com.au

GREEN PLOUGH

This series of paintings was produced in response to a unique revegetation program of degraded farmlands known as the Gondwana Link. It was through meeting Albany resident and Gorepani Gallery owner Anne Brandenburg I gained insights and connection to this ambitious plan. Its purpose being to re-establish the original tracts of flora and fauna across a vast region of South Western of Australia.

With a variety approaches and designs, this series uses a deliberate mix of illustrative and abstract imagery to create a 'magazine' style of ads, information and documentation.

The ideas are derived from field trips made to the affected areas, my childhood experiences visiting relative's farms and from listening to those involved in the project.

In a paddock with newly planted shrubs almost knee high I was shown the 'seeding machine' that was being used for the task. I was surprised by this as it was in fact a relatively small converted plough; it's from this first impression that the title for the series came about.

Ron Nyisztor

Artist's statement
2008

GONDWANA LINK

“South-western Australia is one of the world’s top 35 biodiversity hotspots, places “where exceptional concentrations of endemic species are undergoing exceptional loss of habitat”.

The inspiration for Gondwana Link began with an early satellite photograph of Australia’s south western corner. That photo showed the vast extent of natural vegetation lost since European settlement. It also showed the opportunity we have to protect the remaining areas and to reconnect an important evolutionary pathway - from the tall south western forests to semi-arid woodlands bordering the inland deserts.

A simple plan was conceived: protect what remains, restore the critical gaps, maintain the extraordinary nature of south western Australia. And do it at a scale readily visible from space.”

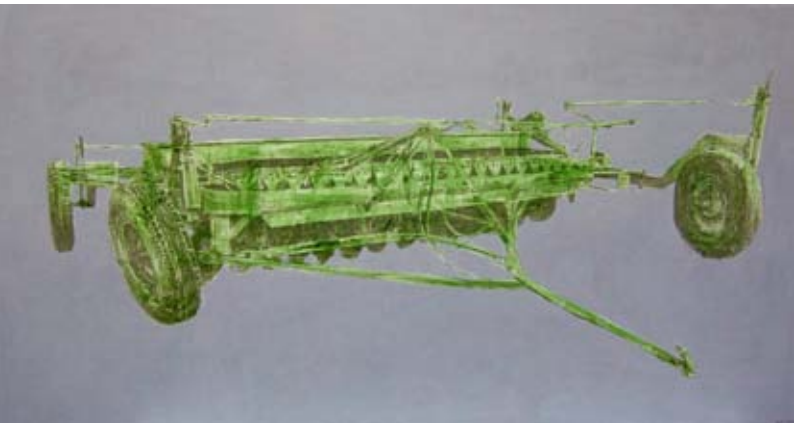
For more information on Gondwana Link, visit:
www.gondwanalink.org

RON NYISZTOR

Ron Nyisztor is a mid-career Western Australian artist working with a wide range of materials and subjects; he has been exhibiting regularly since 1989. His consistent practice involves discarded building materials being used as the subjects for paintings and also as the support or ground for actual paintings.

As still life subjects for paintings the found objects are incorporated into dynamic compositions. The mundane subject matter used in his work attains compelling intrigue; it communicates a sense of the metaphysical expressed through familiar and extra-ordinary means.

Ron Nyisztor has artwork in the collections of the Art Gallery of Western Australia; Kerry Stokes Collection; Federal Court of Australia; Edith Cowan University; Artbank; Bankwest; ANZ Bank; Industrial Relations Court of Australia; National Native Title Tribunal (WA); Princess Margaret Hospital; Royal Perth Hospital; and in private collections within Australia, UK, USA, Kenya, Japan, Germany and Austria.



Green Plough
acrylic on canvas
123 x 239 cm
\$7,000



Lacquered Wood Shiny Pen
oil on canvas
120 x 140 cm
\$4,000



Great Southern
oil on canvas
140 x 170 cm
\$5,800



Diesel and Dust
oil on board
55 x 58 cm
\$1,200



Land of Endless Opportunity

oil on canvas
120 x 150 cm
\$4,000



Dunnart

oil on canvas
33 x 41 cm
\$850

The fat tailed dunnart is a carnivorous marsupial mouse that stores nutrients in its tail. Found in the south west region of WA, it is also a survivor, inhabiting in reduced numbers the new wastelands.



Boobook Owl
oil on canvas
33 x 41 cm
\$850

The small series of fauna and flora images are of the south west region. Mostly hidden in the paint film, they flash into view at various viewing angles and light situations. They are a gesture of the storehouse of specialised rarity that may once again flourish amongst the new green corridors of a healed land.



Busy Monster
oil on canvas
120 x 140 cm
\$4,000

An image of burning candles joined like a wheel or an echo of the union jack symbolises the gold rush type fervor of preparing new land for farming. Incentive policies of the sixties were designed to encourage this and resulted in a million acres a year being chained and burned.



Rising to the Surface

(John Thompson)

115 x 95 cm

oil on board

\$2,500

Rising to the Surface refers to the shift in consciousness as seen in the life and career of one of Western

Australia's first conservationists, John Thomson. Originally involved in the forestry industry and later becoming dedicated to the work of creating awareness of the unique and fragile Western Australian flora.



Salt

oil on board

113 x 95 cm

\$2,500

Rising up and coming to the surface, salt is often the result of interference on a fragile system.



Gilberts Potoroo

oil on canvas

33 x 41 cm

\$850



D9

acrylic on canvas

120 x 140 cm

\$4,000

D9 refers to the powerful caterpillar series with legendary reputation for pulling chains and digging dams.



Slow Burn

oil and gold leaf on canvas
55 x 58 cm
\$1,200

**Land Locked
Islands**

oil on board
113 x 95 cm
\$2,500

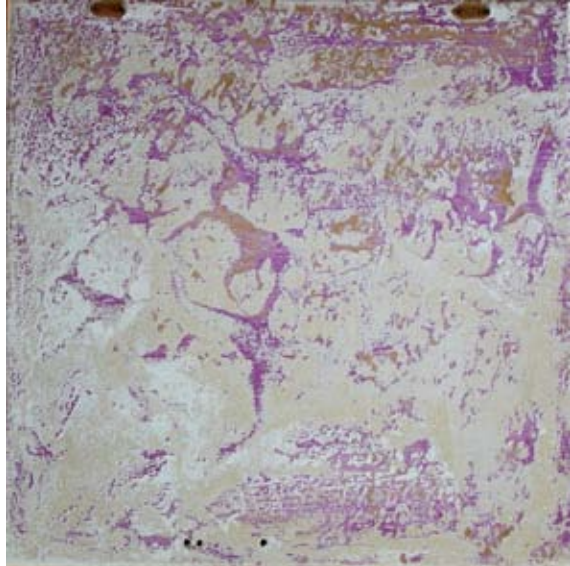
Landlocked Island gives visual perspective to the enormity of the task of land management and habitat reconstruction.

The painting depicts the entire south eastern wheatbelt area of Western Australia, an area that in the 1960's and 70's was subject to massive amounts of land clearing for agricultural production.





Super
oil on board
113 x 95 cm
\$2,500



Lake Magenta
enamel on board
55 x 58 cm
\$1,200



Kerosene Fridge

oil on enameled metal (freezer door)

55 x 58 cm

\$1,200



D7

oil on board

55 x 58 cm

\$1,200

Often referred to as 'she', like most great machines or ships, *D7* refers to the struggle and resilience of women in these pioneering outposts where household comforts and food supplies were meagre.



Visit Fillaudeau's at Pinelli Estate for engaging, contemporary art and fine cuisine created from the freshest locally sourced ingredients.

Through a shared passion for great food, wine and art, Nyisztor Studio and Fillaudeau's café - restaurant have teamed up to showcase the artworks of significant mid-career Western Australian artists. The exhibitions are curated by Swan Valley based curator, Amanda Alderson. Exhibitions will change every two months, featuring solo shows and themed group exhibitions.

FINE ART + FINE FOOD + FINE WINE

FINE ART

Nyisztor Studio is an independent artist run space. Combining multiple exhibition venues, the aim is to curate and host exhibitions, to provide a support network to its associated artists and to house artist studios.

Nyisztor Studio supports mid career arts professionals based in Western Australia, and has successfully gained a reputation as a dedicated gallery space with high quality and intelligently curated shows. The main gallery space is located in Melville, WA. A partnership has been formed with Fillaudeau's café - restaurant in Caversham WA and in Sydney, NSW.

+ FINE FOOD

Fillaudeau's café – restaurant prides themselves on using quality Australian and mainly Western Australian ingredients wherever possible. They source seafood from the cleanest waters, meat from the greenest pastures, free-range poultry, eggs and fruit & vegetables from the fresh produce markets of Perth. Fillaudeau's aim is to be as sustainable as possible, recycling cardboard and glass, re-using and composting waste products, whenever able.

Fillaudeau's food is a contemporary fusion of classic French, Mediterranean and Modern Australian cuisines, shared and enjoyed throughout the owner's international work experiences in Europe and Australia and travelling with friends and family.

“We love this earth, and as our grandad said, we are borrowing it from our children. We look forward to sharing with you our passion for great food and wine.”

Bon Appetit! Manu and Jazz Fillaudeau

+ FINE WINE

Pinelli Estate, nestled in the historic Swan Valley, enjoys a family winemaking heritage that dates back to 1955 when founder Domenic Pinelli emigrated to Australia. Today the Swan Valley's second-generation winemaking team continually strive for perfection from the vineyard to the glass to create delicious, premium wines for any fine dining, family gathering or special occasion.

The Swan Valley, with its rich soils, was an ideal region to grow grapes and produce premium wines. The winters are wet and the summers filled with adequate sunshine to ensure maximum flavour and ripening of the grapes. The outcome are wines that are approachable and drinkable even at an early age - the white wines are delicate and soft and the red wines full and rich in flavour. Pinelli's philosophy is simple, ensuring exceptional quality from the vineyard to the glass.



Fillaudeau's café – restaurant is located at Pinelli Estate in the Swan Valley,
30 Bennett Street, Caversham Western Australia.

Nyisztor Studio is housed at 391 Canning Hwy, Melville

Subscribe for regular art, food and wine updates:

www.nyisztor.com.au | www.fillaudeaus.com.au | www.pinelliwines.com.au

Nyisztor
Studio



